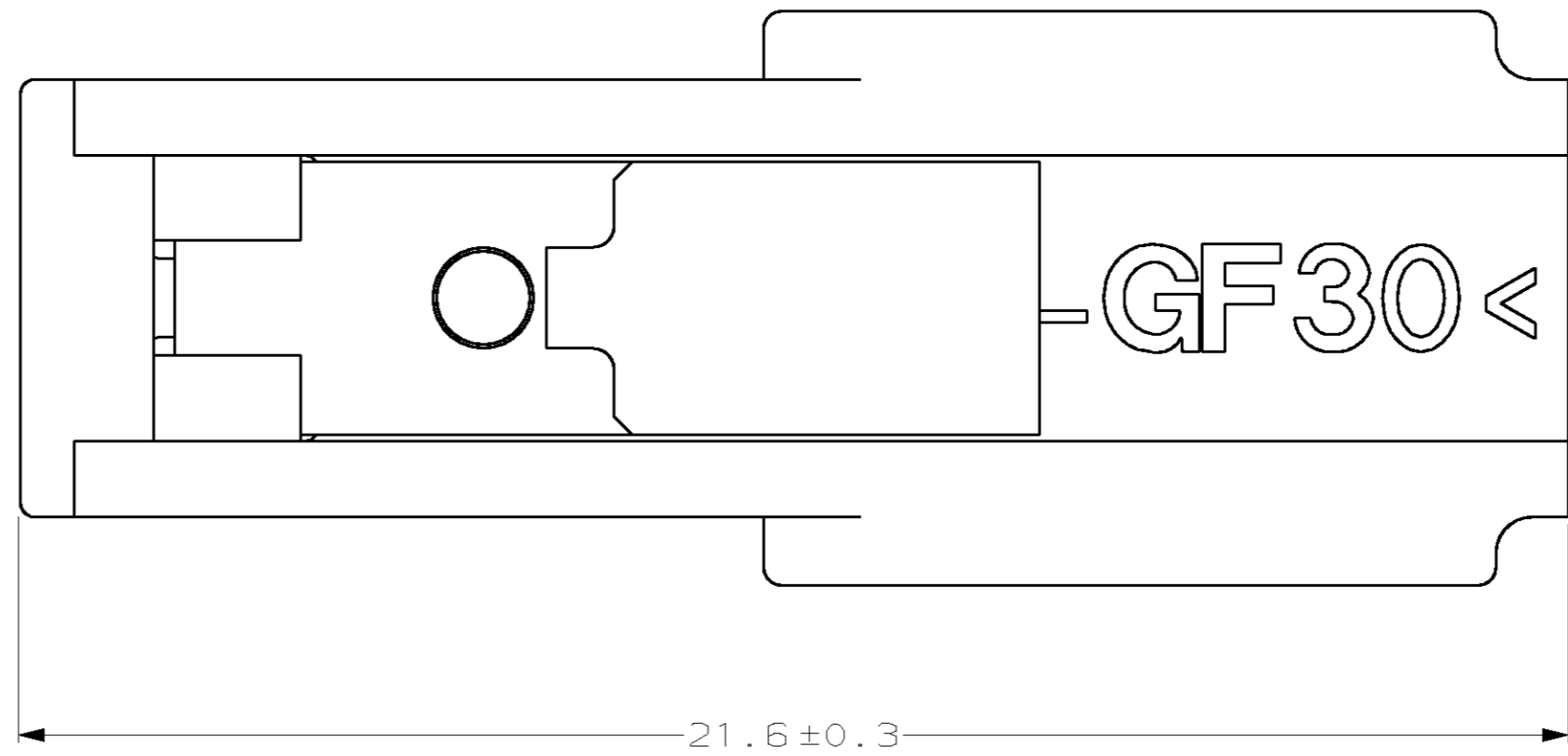
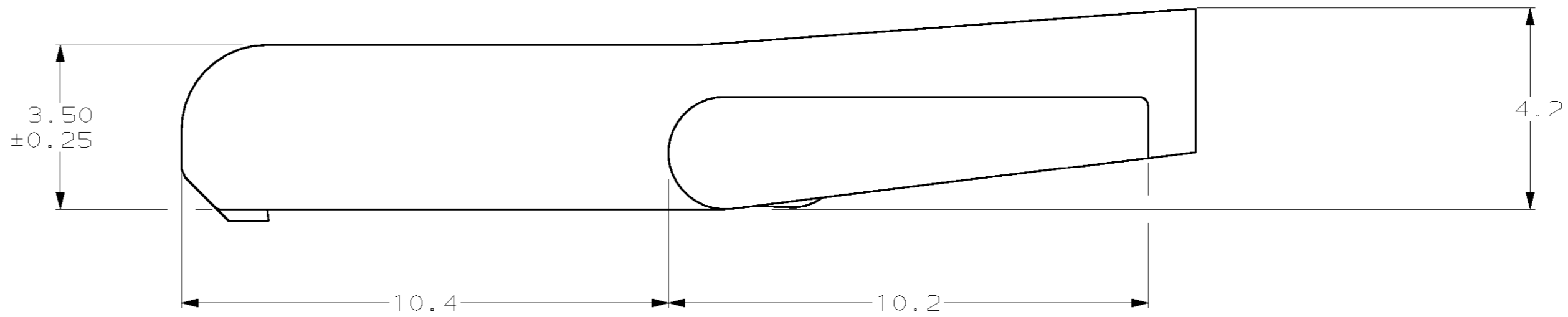
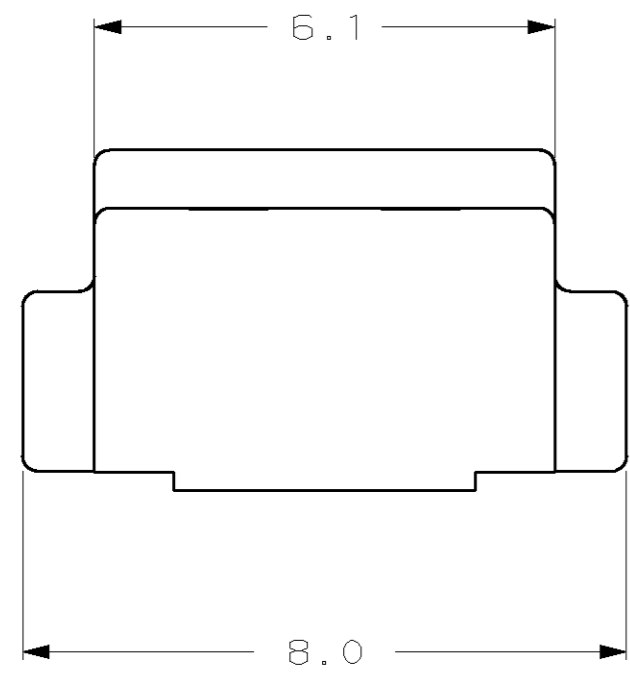


THIS DRAWING IS UNPUBLISHED. RELEASED FOR PUBLICATION .19  
 © COPYRIGHT 19 BY AMP INCORPORATED. ALL RIGHTS RESERVED.

LOC		DIST		REVISIONS			
P	LTR	DESCRIPTION	DATE	DWN	APVD		
AG	0	C	REVISD PER 051C-0024-00	28 MAR 00	AH	CC	

1. USED IN AMP-DUAC/PL™ RECEPTACLE HOUSINGS. ONE REQUIRED PER HOUSING.
  2. INSTALL LATCH ASSEMBLY AFTER CUSTOMER SUPPLIED BACKSHELL. (USE OF BACKSHELL IS OPTIONAL).
  3. LATCH ASSEMBLY AVAILABLE WITH EXTENDED LEVER ARM, 794150-1.
- △ MATERIAL: LATCH ARM - PBT, GLASS REINFORCED  
 COLOR - NATURAL.  
 SPRING - STAINLESS STEEL.



794150-1  
 PART NUMBER

THIS DRAWING IS A CONTROLLED DOCUMENT.		DWN	K. WHITAKER	8-15-97	AMP Incorporated Harrisburg, PA 17105-3608				
DIMENSIONS:		CHK	R. SWING	8-15-97					
TOLERANCES UNLESS OTHERWISE SPECIFIED:		APVD	E. BEILES	8-15-97					
mm		PRODUCT SPEC	108-1646						
0 PLC	±-	APPLICATION SPEC	114-6067		SIZE	CAGE CODE	DRAWING NO	RESTRICTED TO	
1 PLC	±0.2	WEIGHT	-		A2	00779	C-794150	-	
2 PLC	±0.13	CUSTOMER DRAWING		SCALE	10:1	SHEET	1 OF 1	REV	C
3 PLC	±-								
4 PLC	±-								
ANGLES	±1°								
MATERIAL	△								
FINISH	△								

**METRIC**